

# Wall Jib Cranes

## 100 & 200 Series



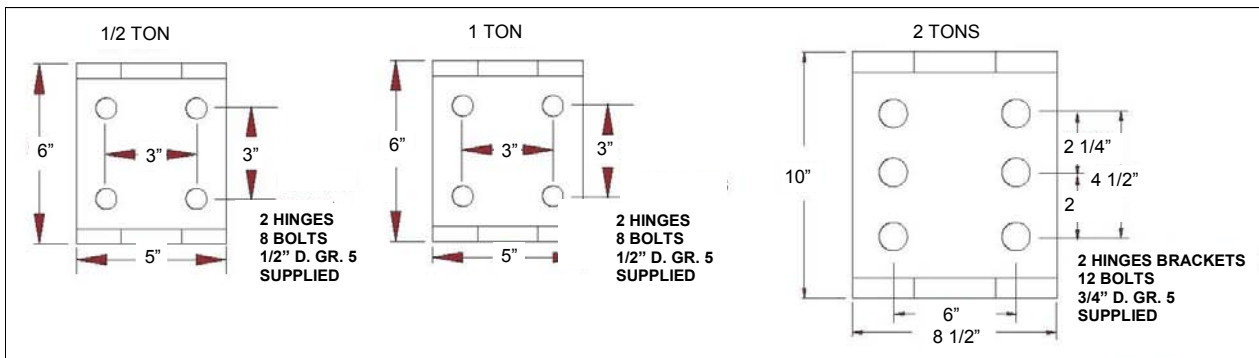
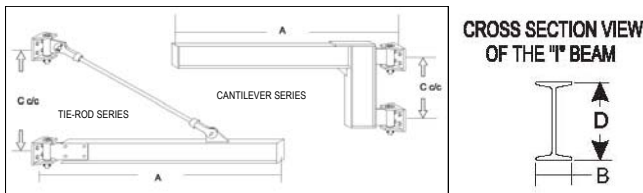
## Wall Jib Cranes

Tie rod or Cantilever Series Are an economical solution for handling materials within an individual workstation, or for use as an auxiliary lifting device under an overhead crane offering 200° rotation.

Wall Jib Cranes

Model No.	Cap. lbs	Dimensions				Weight lbs
		A	B	C	D	
<b>100 Series</b>						
100-10-8	1,000	8'	3 5/16"	32"	6"	192
100-10-10	1,000	10'	4"	36"	8"	300
100-10-12	1,000	12'	4"	45"	8"	295
100-20-8	2,000	8'	4"	32"	8"	265
100-20-10	2,000	10'	4 5/8"	36"	10"	390
100-20-12	2,000	12'	4 5/8"	45"	10"	435
100-40-8	4,000	8'	5"	60"	12"	450
100-40-10	4,000	10'	5"	60"	12"	550
100-40-12	4,000	12'	5"	60"	12"	650

Model No.	Cap. lbs	Dimensions				Weight lbs
		A	B	C	D	
<b>200 Series</b>						
200-10-8	1,000	8'	3 5/16"	32"	6"	163
200-10-10	1,000	10'	3 5/16"	36"	6"	190
200-10-12	1,000	12'	3 5/16"	45"	6"	233
200-10-14	1,000	14'	4"	54"	8"	340
200-10-16	1,000	16'	4"	66"	8"	375
200-20-8	2,000	8'	3 5/16"	32"	6"	180
200-20-10	2,000	10'	3 5/16"	36"	6"	220
200-20-12	2,000	12'	3 5/16"	45"	6"	243
200-20-14	2,000	14'	4"	54"	8"	350
200-20-16	2,000	16'	4"	66"	8"	385
200-40-8	4,000	8'	4 5/8"	36"	10"	395
200-40-10	4,000	10'	4 5/8"	38"	10"	445
200-40-12	4,000	12'	4 5/8"	51"	10"	495
200-40-14	4,000	14'	4 5/8"	58"	10"	545
200-40-16	4,000	16'	4 5/8"	68"	10"	595



If your capacities are not shown with our standard designs, custom designs can be engineered to satisfy specific needs.